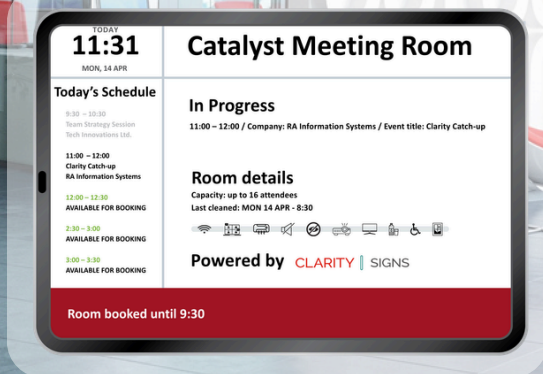


# CLARITY | SIGNS



Smart solutions for the modern workspace

## ROOM AND OFFICE BOOKING AND SIGNAGE, DOOR AND RECEPTION DISPLAYS

Integrated touch-screen digital display solution, designed to simplify the booking process and visually communicate availability. Clarity Signs is ideal for premises with co-working and shared office space, such as boardrooms, conference suites or meeting rooms, lounges, conversation pods or individual work stations.

- Visual room availability and reception overview for all rooms
- Intuitive on-the-spot booking for your staff and guests
- Custom info on reception screen
- Greater user experience for your staff and guests
- Optimised use of space, plus potential revenue for your business

CLARITY SIGNS can be purchased independently or as an add-on module of **CLARITY CORE** our Workspace Management System



## Options for strategic positioning

- **At meeting room entrance**

Eye-catching CLARITY SIGNS can be installed at meeting room doors and conferencing facilities, helping your employees and clients to plan meetings and events as well as assisting customers looking for available space the same day or in the future.

- **In reception area or entryway**

CLARITY SIGNS can be installed in reception/front of house area, to display custom info including real-time meeting room overview and at-a-glance availability, client listings, latest news, announcements and events to promote your site and clients.

**Flexible mounting: Wall-mount, Floor-standing, Counter-Top or Flexible stalks**

**Power options: Power-over-Ethernet or Mains Power | Data options: LAN or Wi-Fi**

## Direct Outlook & Teams Room Calendar Integration

CLARITY SIGNS connects directly to your Microsoft 365 room resource calendars via secure Azure OAuth access — no middleware or user-device dependency. The screens display real-time availability by syncing directly with your Office 365 environment.

- **Live Updates:** Ad-hoc bookings or cancellations made via Outlook or Teams are reflected instantly on the screen.
- **Flexible Booking:** Reserve rooms via Outlook on desktop, web, or mobile. The screen updates automatically.
- **Secure & Direct:** Screens connect securely to Office 365 using Azure authentication — no access to user mailboxes required.
- **Connection Options:** Requires Ethernet for data; PoE preferred for power, but mains supply is also supported.



# CLARITY CORE

Smart solutions for the modern workspace

## MOUNTING OPTIONS FOR YOUR DIGITAL SCREENS

Display your Clarity screens your way — wall-mounted, floorstanding or countertop. Whatever the environment, we offer sleek, professional mounting solutions tailored for:

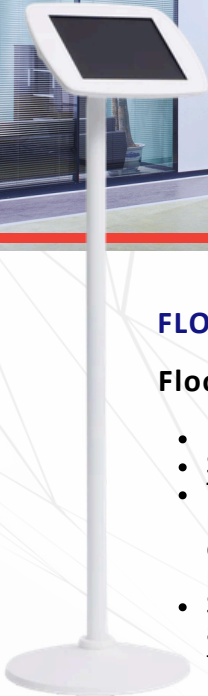
- Clarity Signs – Room booking and digital signage
- Clarity Visitors – Sign-in and visitor management
- Clarity Parcels – Parcel scanning and self-collection



## FLOORSTANDING

### Floorstanding with weighted base

- 114cm high for standing interaction.
- Set in portrait or landscape.
- The heavy solid steel base ensures stability, perfect when mounting to the floor is not an option (can be mounted to the floor if preferred).
- Smart Power Options: Conceal a power adaptor or battery pack in the base, within the mounting arm.



### Floorstanding with weighted base + Brother® Printer Mount for visitor management

- 114cm high for standing interaction.
- Set in portrait or landscape.
- The heavy solid steel base ensures stability, perfect when mounting to the floor is not an option (can be mounted to the floor if preferred).
- Smart Power Options: Conceal a power adaptor or battery pack in the base, within the mounting arm.
- Holds a Brother Label Printer.



### Floorstanding slim

- 113cm high for standing interaction.
- Set in portrait or landscape.
- Streamlined base designed for permanent floor installation. Includes a 2 meter USB Sync and Charge Cable.



## COUNTER-TOP



### Counter

- Freestanding base makes it simple to move around on the counter-top, ideal for installations where you cannot drill holes into the counter.
- No mounting or permanent fixings required.
- Set in portrait or landscape.

### Desk

- Mount to your desk table or counter top. Ideal for places where the tablet needs to stay in a stable position.
- A durable, low-profile stand, perfect for reception areas or office spaces.
- Cables neatly stored inside.
- Set in portrait or landscape.

### Counter 60

- Freestanding base makes it simple to move around on the counter-top, ideal for installations where you cannot drill holes into the counter.
- No mounting or permanent fixings required.
- Set in portrait or landscape.

### Flex

- Offers a full range of movement with a flexible gooseneck mounting arm
- that lets you twist and turn the screen at any angle.
- Mount to your desk table or counter-top.
- Set in portrait or landscape.

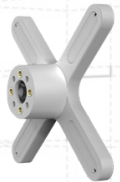




## WALLMOUNT

### Wall mount faceplate

- A space-saving low profile solution designed to keep your tablet on vertical surfaces and walls at eye level. Ideal for areas with limited surface space, such as corridors.
- Fixed at an angle of 60° to entice interaction.
- Run cables through the inside to keep your screen continuously powered and looking tidy.
- Mount to a Vesa articulated arm or to the wall.
- Set in portrait or landscape.



### Wall mount faceplate 60

- A space-saving low profile solution designed to keep your tablet on vertical surfaces and walls at eye level.
- Fixed at an angle of 60° to entice interaction.
- Run cables through the inside to keep your screen continuously powered and looking tidy.
- Set in portrait or landscape.



## All options support:

- Compatibility with a wide range of tablet models.
- Colour choice: white or black.
- High-Security Enclosures: Ideal for public spaces with limited supervision. Lock your tablet inside the enclosure using the lock and key system.
- Concealed Cables: Cables are completely concealed to avoid tampering.

## Mounting Options:

Our Desk, Flex, & wallmounting arms can be installed in two ways:

- Surface Mounting (Fixing from Above) – Attach directly to the top of a desk, counter, or wall using supplied Torx security wood screws. Ideal for thick surfaces or walls where you can't access the reverse.
- Through Mounting (Fixing from Below) – Drill right through the surface and secure with bolts/fasteners from underneath or behind. Creates a strong, streamlined fixture.

To discover more about our truly versatile & interactive screens

Contact us today

By email:  
[info@clarity-core.com](mailto:info@clarity-core.com)

By phone:  
0330 223 11 44

[www.ra-is.co.uk](http://www.ra-is.co.uk)

 CLARITY CORE

 @CLARITYCORE

 RA Information Systems

 @rainfosystems

 rainfosystems